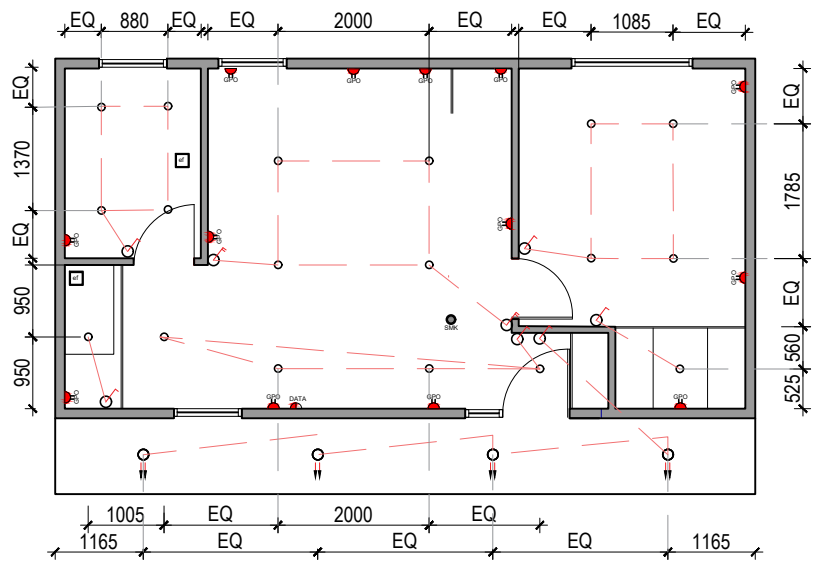
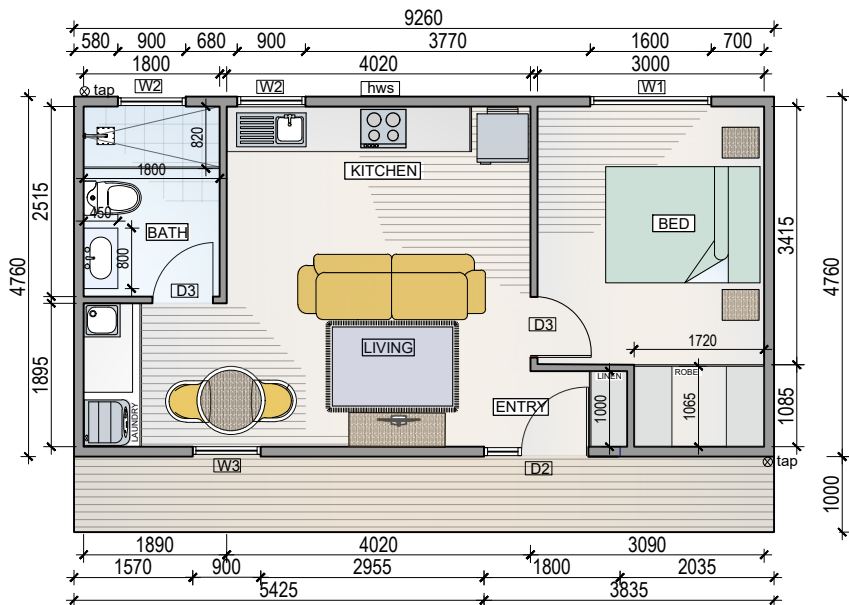


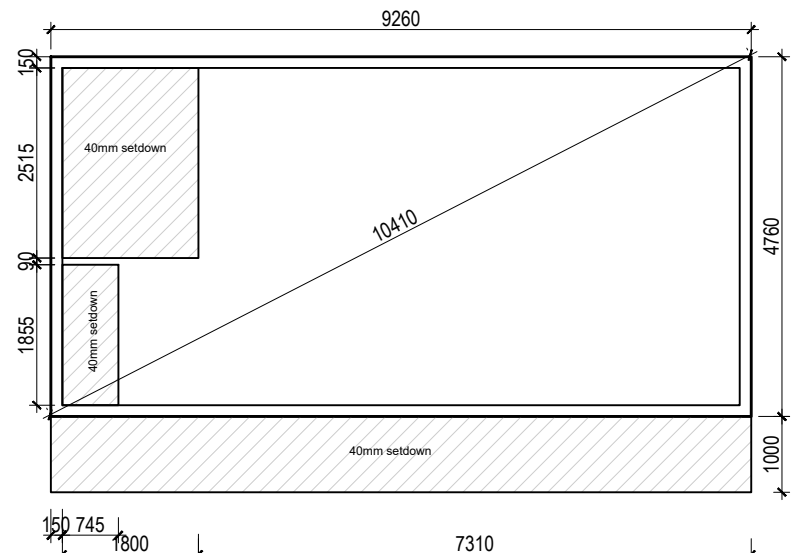
Roof Plan



Electrical Layout Plan

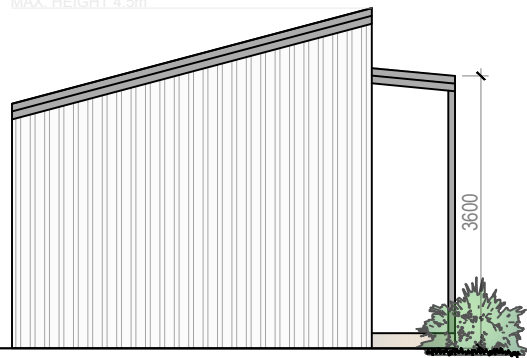


Floor Plan



Slab Layout Plan

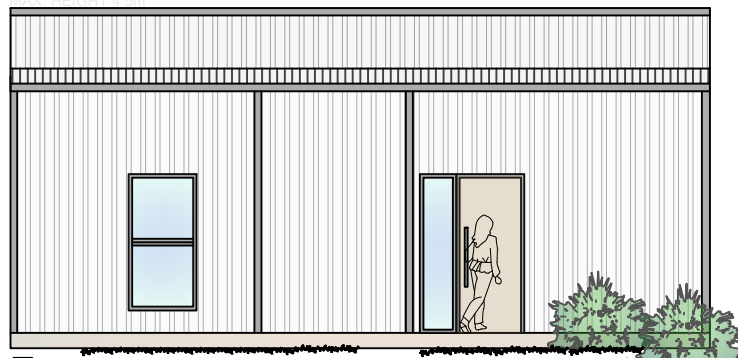
MAX. HEIGHT 4.5m



Side

1:100

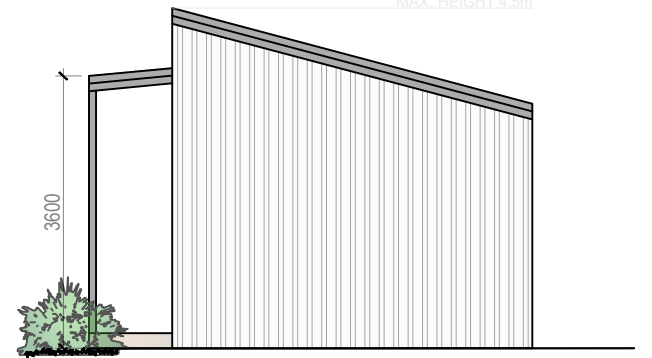
MAX. HEIGHT 4.5m



Front

1:100

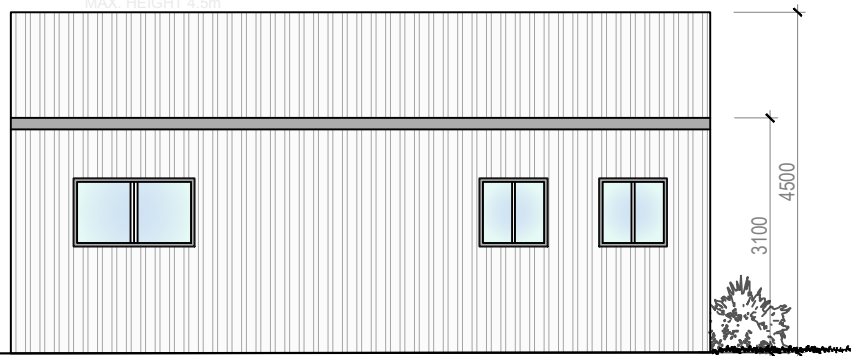
MAX. HEIGHT 4.5m



Side

1:100

MAX. HEIGHT 4.5m



Rear

1:100

WINDOW:	W1	W2	W3
LOCATION :	BED	DINING, KITCHEN, BATH	LIVING
HEAD HEIGHT:	2100mm	2100mm	2100mm
SILL HEIGHT:	1200mm	1200mm	300mm
GLAZING:	CLEAR	CLEAR	CLEAR
STYLE:	SLIDING - ALUMINIUM	SLIDING - ALUMINIUM	DIHUNG - ALUMINIUM

DOOR:	D1	D3
LOCATION :	ENTRY	BED/BATH
HEAD HEIGHT:	2100mm	2100mm
MATERIAL:	TIMBER	TIMBER
STYLE:	HINGED	HINGED

SITE AREA CALCULATION	
NAME	Area
1. SITE AREA	TBA
2. GFA (gross floor area)	40m2
3. MAX HEIGHT	4.5m
4. SIDE SETBACK	900mm
5. REAR SETBACK	3m



Build It 4 U

1 BEDROOM
STYLE 2