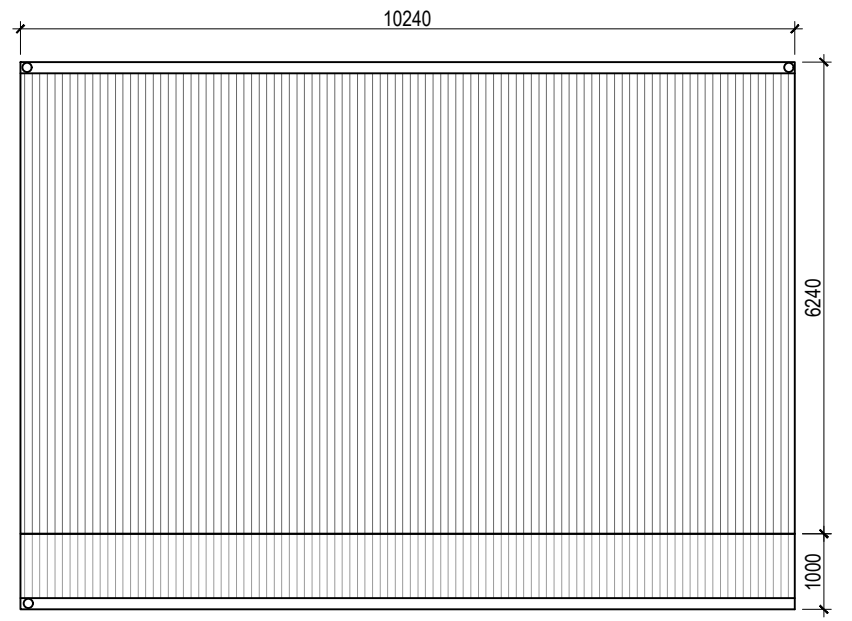
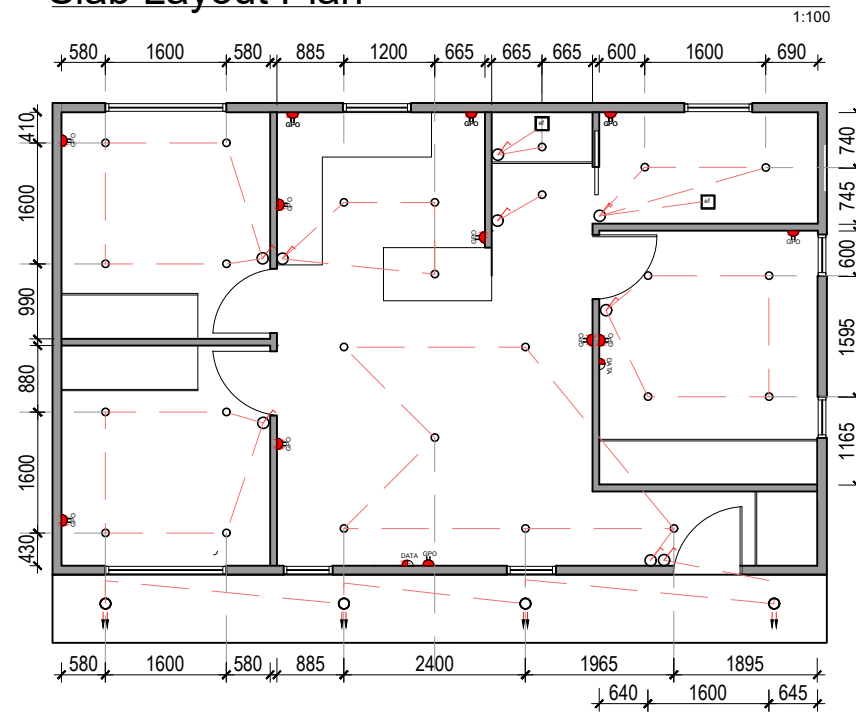


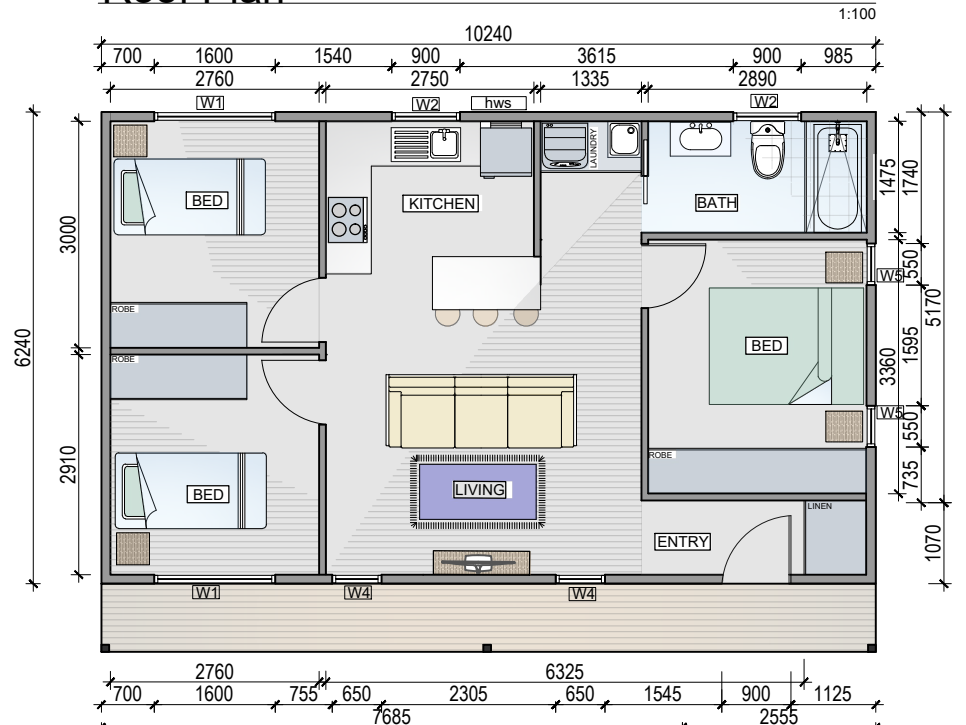
Slab Layout Plan



Roof Plan



Electrical Layout Plan

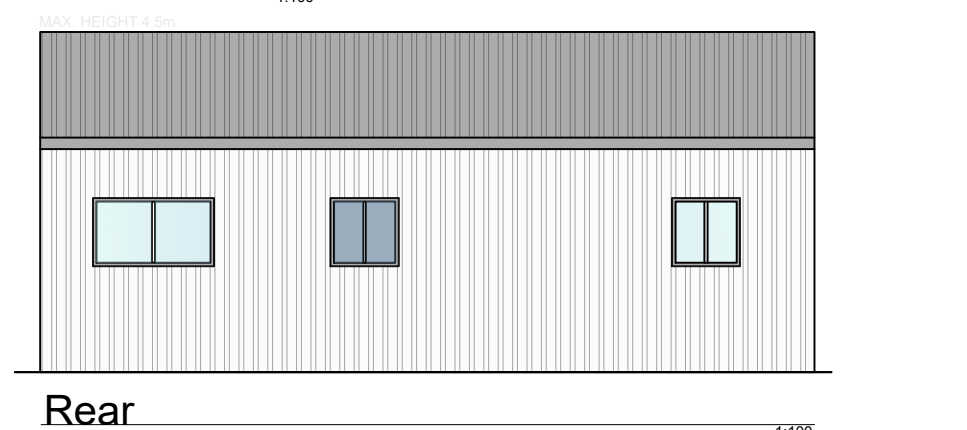


Ground Plan



WINDOW:	W1	W2	W3	W4	W5
LOCATION:	BED	DINING, KITCHEN, BATH	LIVING	LIVING	LIVING
HEAD HEIGHT:	2100mm	2100mm	2100mm	2100mm	2100mm
SILL HEIGHT:	1200mm	1200mm	300mm	300mm	500mm
GLAZING:	CLEAR	CLEAR	CLEAR	CLEAR	CLEAR
STYLE:	SLIDING - ALUMINIUM	SLIDING - ALUMINIUM	D/HUNG - ALUMINIUM	D/HUNG - ALUMINIUM	D/HUNG - ALUMINIUM

DOOR:	D1	D3	D4
LOCATION:	ENTRY	BED/BATH	BED/BATH
HEAD HEIGHT:	2100mm	2100mm	2100mm
MATERIAL:	TIMBER	TIMBER	TIMBER
STYLE:	HINGED	HINGED	HINGED



Rear

SITE AREA CALCULATION	
NAME	Area
1. SITE AREA	TBA
2. GFA (gross floor area)	60m2
3. MAX HEIGHT	4.5m
4. SIDE SETBACK	900mm
5. REAR SETBACK	3m



3 BEDROOM
STYLE 2